

HOW TO INSTALL SECURITY TOKEN TO PC/LAPTOP & CHANGE TOKEN PIN

Version 2.0

Issue Date: 30th April 2024

Issued By: LankaPay Private Limited

Your Trusted
Payment Network



How to Install Security Token to PC/Laptop

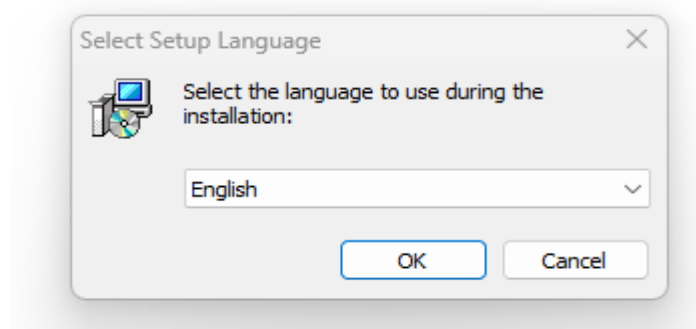
1. Plug the Security Token to PC / Laptop and copy the CryptoID_Setup.exe Software from Security Token.

Name	Date modified	Type	Size
Files Currently on the Disc			
AutoRun.exe	3/18/2019 7:27 AM	Application	127 KB
AUTORUN.INF	3/18/2019 7:27 AM	Setup Information	1 KB
CryptoID_Setup.exe	12/11/2019 2:02 PM	Application	1,828 KB
Files Ready to Be Written to the Disc			
desktop.ini	8/3/2023 11:52 AM	Configuration sett...	1 KB

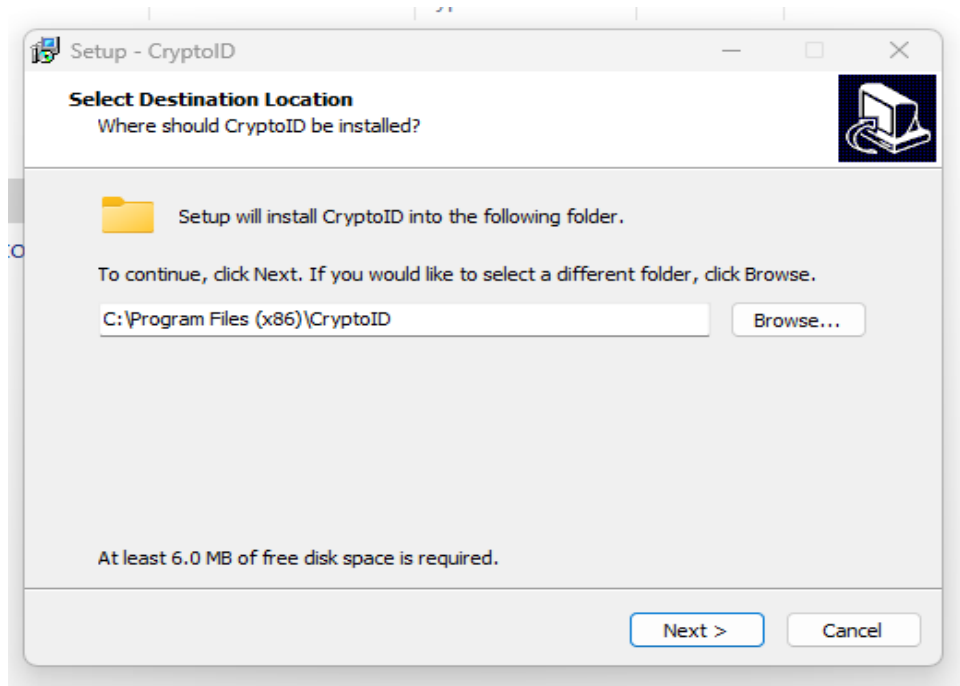
2. Extract the content & install software.
3. Double Click on CryptoID Setup Application

CryptoID_Setup.exe	12/11/2019 2:02 PM	Application	1,828 KB
--------------------	--------------------	-------------	----------

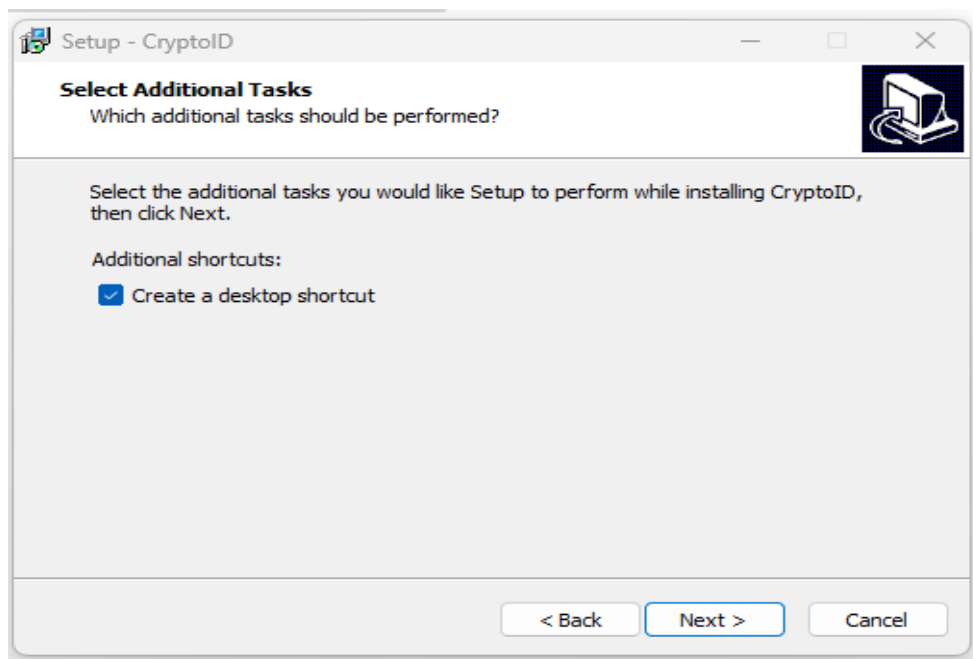
- Install the CryptoID Setup Authentication Client / Double click



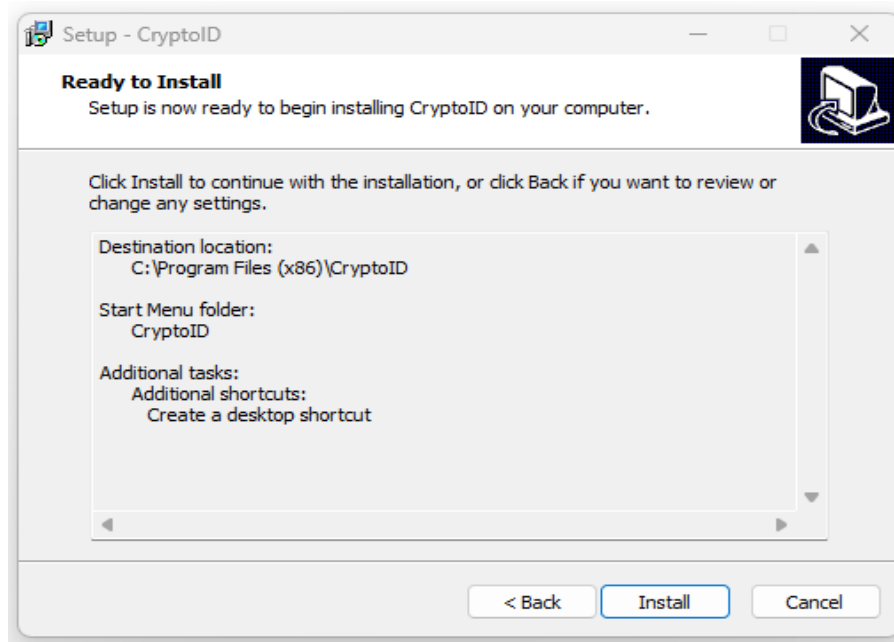
Click → ok



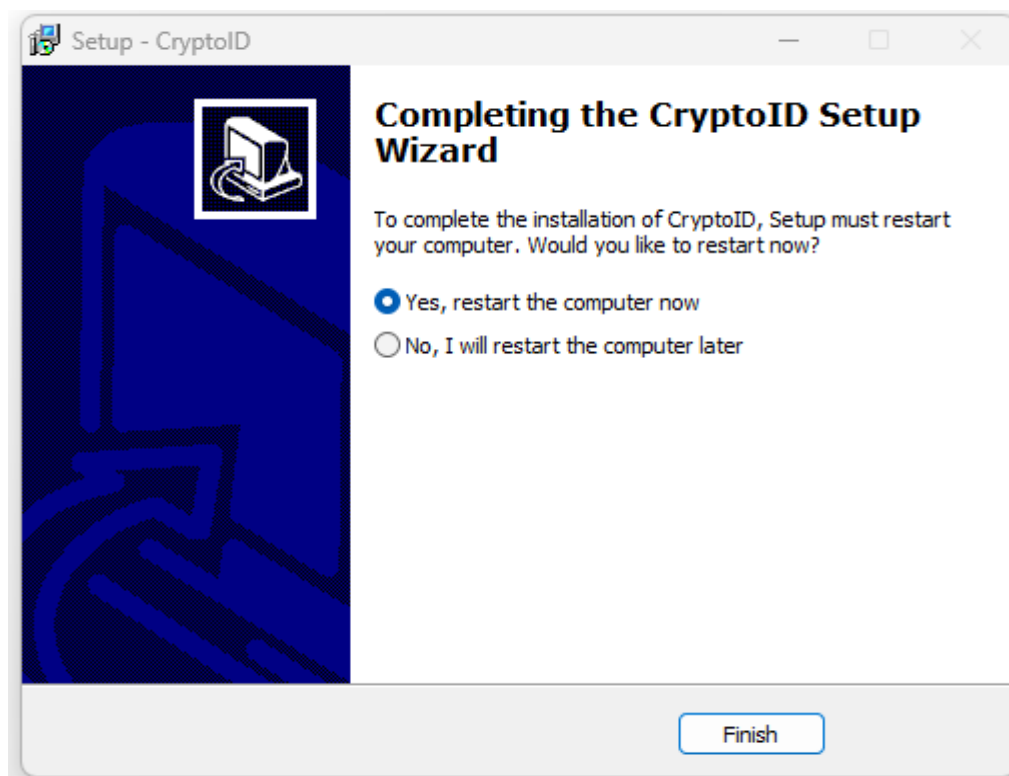
Click  next



Click  next

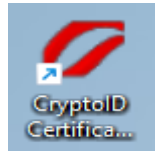


Click  Install

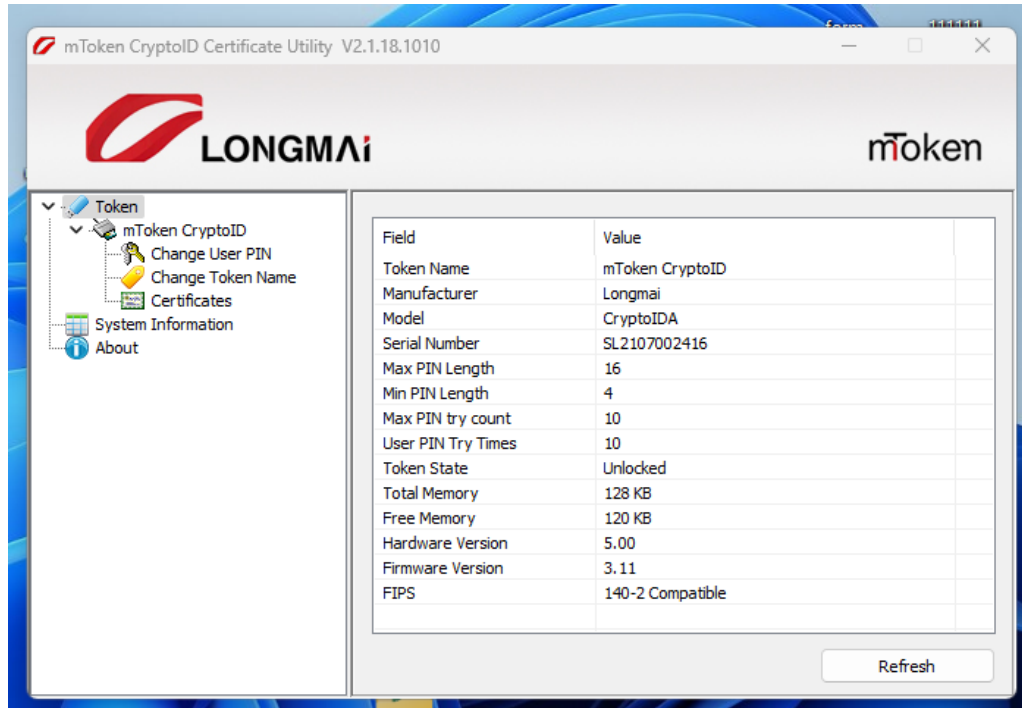


Click  Finish

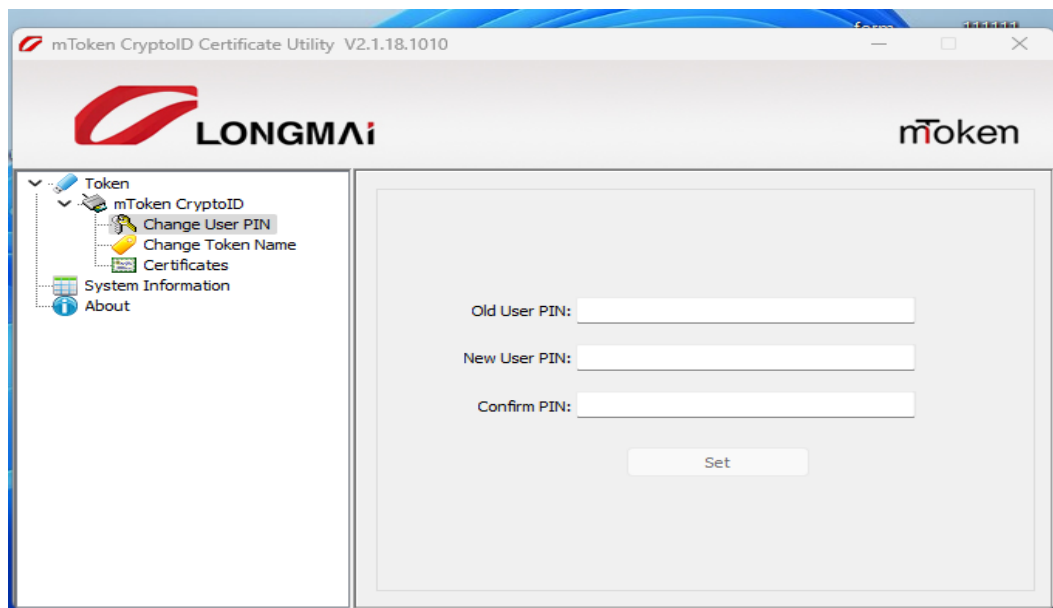
4. Click the Trust key icon before



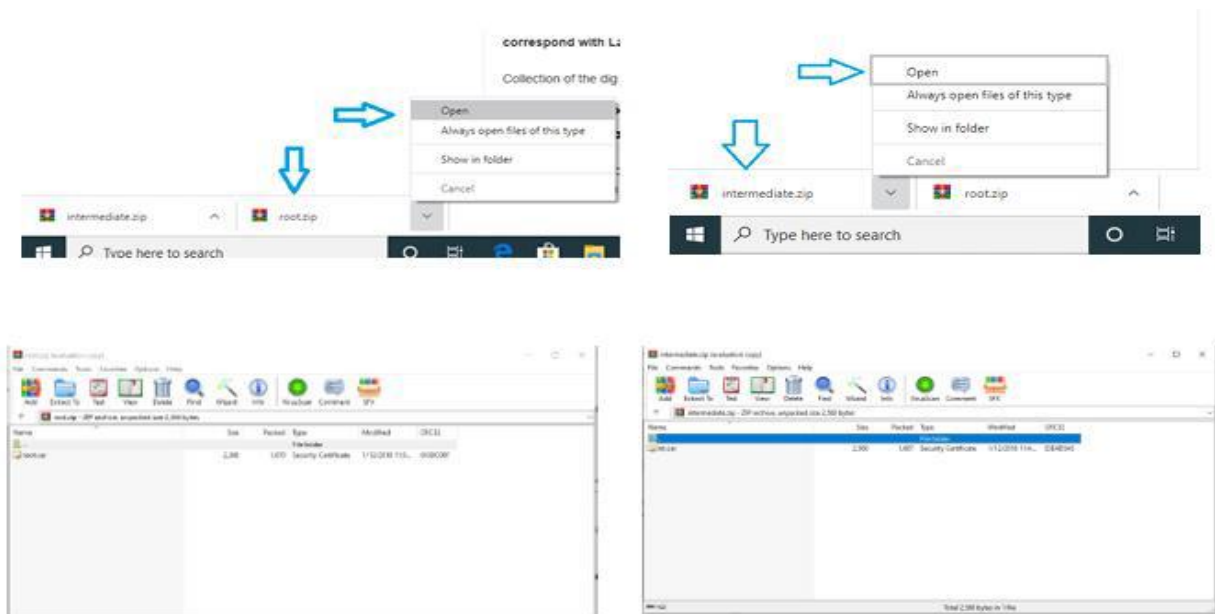
desktop. The display will look like this



5. You can easily get a password using the default password given to you.

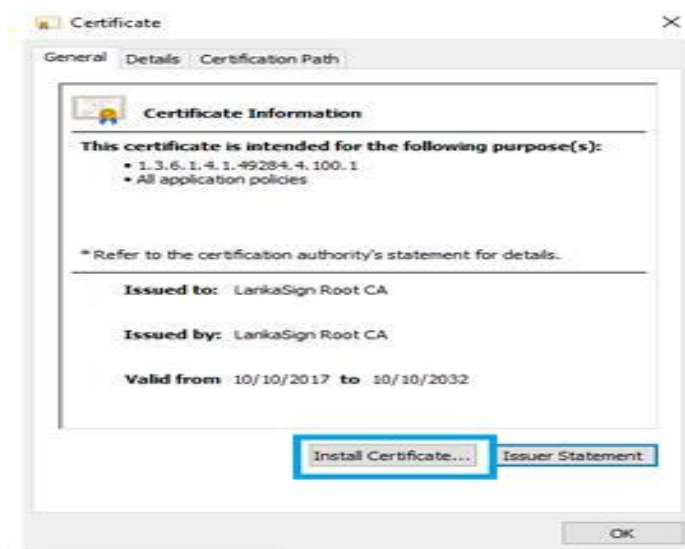


6. Open Root and Intermediate Certificate



7. Install Root and Intermediate Certificate

- Double click Click Install Certificate



Click  Install certificate

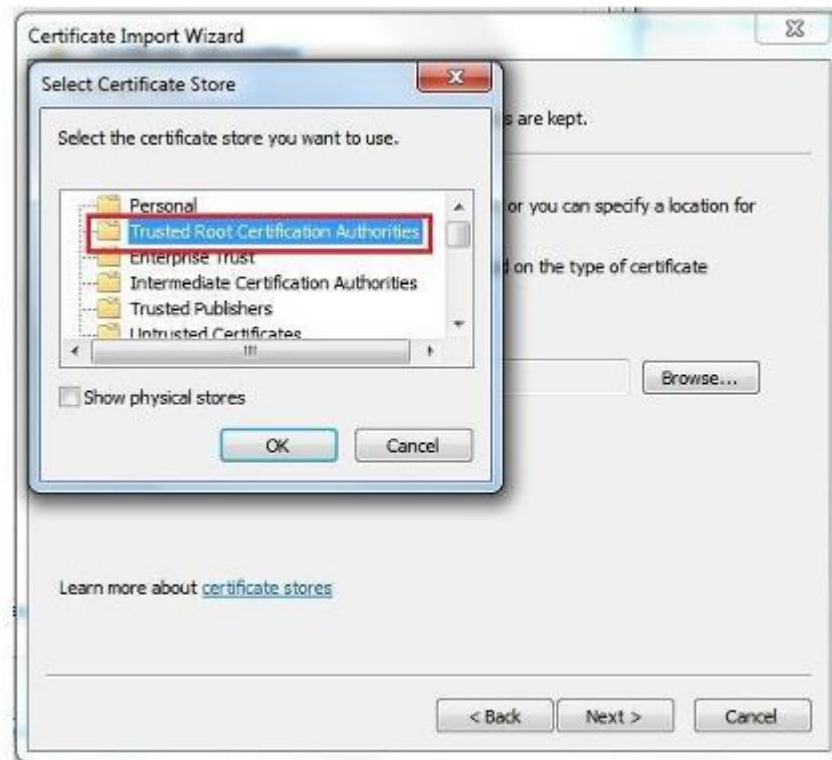


Click  next

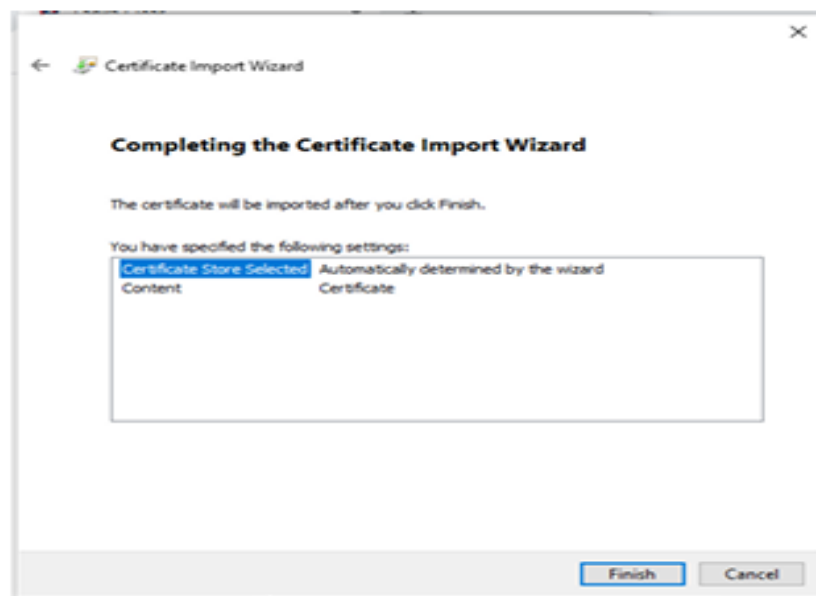
8. Select "Place all certification in the following store" and click on Browse.



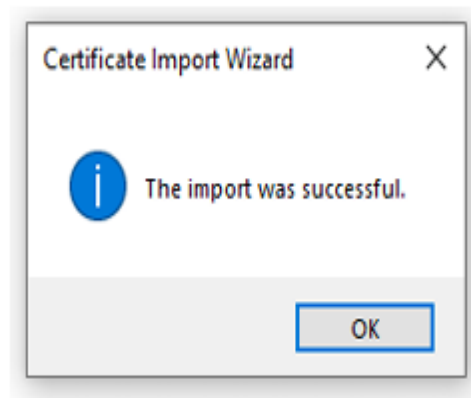
9. If you browsed "LankaSign Root CA" select the certificate store as Trusted Root Certificate Authorities



Click → ok



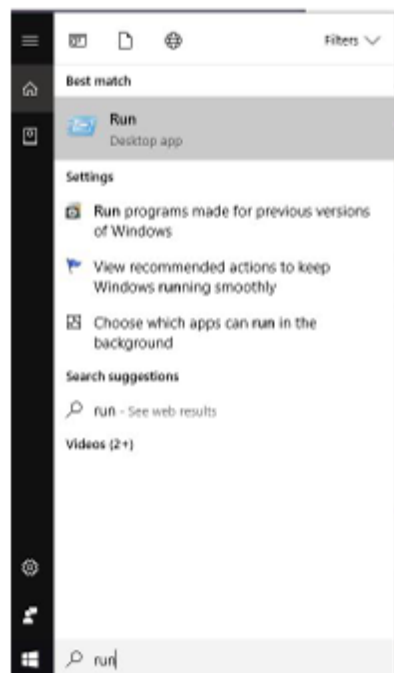
Click → Finish



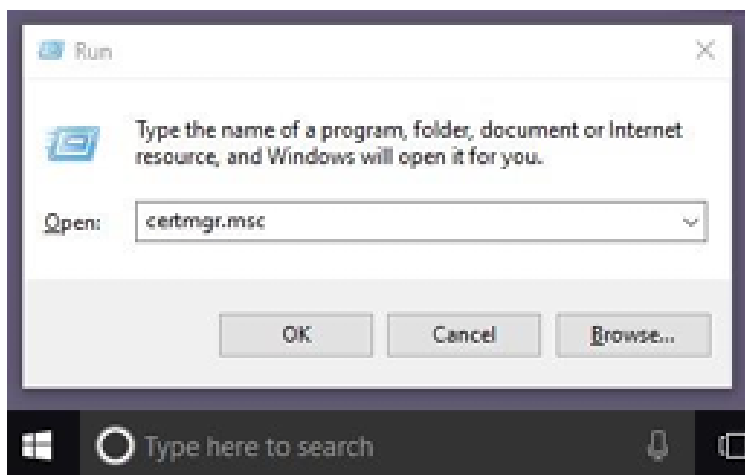
Click → Ok

10. Check the installed certificate

Type in search bar → run



Get the run window



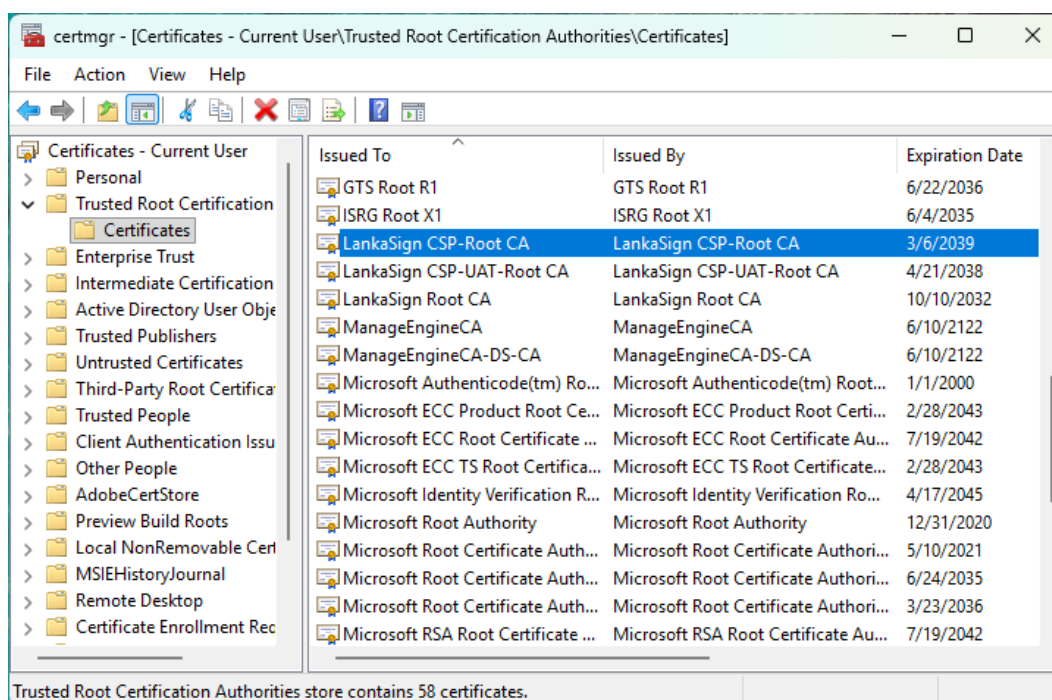
Type on search bar certmgr.msc

Click  Ok

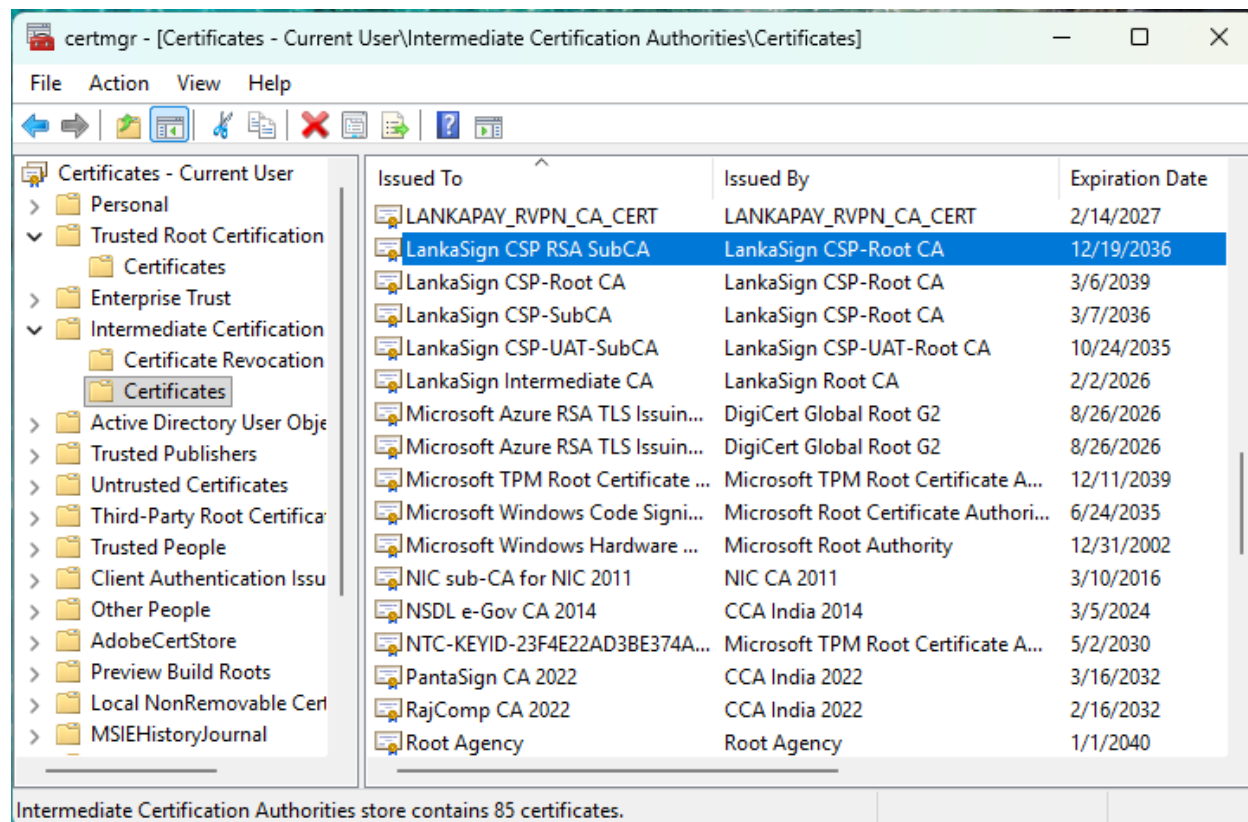
Click  yes in popup window

11. Select the Trusted Root Certification Authorities Certificates

It will show the installed Root Certificate



Select the Trusted Intermediate Certification Authorities Certificates



(It will show the installed Intermediate Certificate)